 ÉQUIPE SANTÉ  
**ALGOMA ONTARIO**  
HEALTH TEAM

# 2026-27 Annual Plan



## Table of Contents

- Who We Are
- Letter From Executive Committee
- Our Population
- Introducing the Operations Committee
- Milestones
- Our Priority Populations
- Logic Model

## Who We Are

The Algoma Ontario Health Team (AOHT) is a team of local health professionals, organizations, and community members working to create a network where residents will have access to the right care, right team, and right care setting when they need it.

## Our Mission

The AOHT will collaborate in a model of care that is person-centred, efficient, and simplified for both individuals and providers.

## Our Vision

An Integrated health system focused on the unique needs of Algoma residents, where people receive seamless, effective care where and when they need it.

## A letter from the Executive Committee

As we launch our 2026–27 Annual Plan, we are proud to begin our seventh year as the AOHT.

This year marks an important step forward in strengthening partnerships and evolving governance. Our partners remain committed to a shared vision and mission grounded in working together. As an Ontario Health Team (OHT), we continue to improve how we work so we can better meet the needs of communities across the Algoma District.

We would like to extend our gratitude to Stephanie Parniak, who completed her term as Patient Partner Tri-Chair on our Executive Committee in January 2026. Stephanie played a key role in centering the voices of patients, families, and care partners to all levels of our work. Her leadership, insight, and commitment to meaningful engagement helped shape a community-centred AOHT. We are grateful for the lasting impact she has had on integrated care in Algoma since the OHT was formed.

We are pleased to welcome Martin Wyant as our new Patient Partner Tri-Chair. Martin brings many years of experience in social services, strong governance knowledge, and a deep commitment to Algoma. His perspective will help ensure our work stays focused on what matters most to patients, families, and care partners across the District.

The 2026–27 Annual Plan builds on the progress made in past years while responding with innovation to a changing environment. The plan focuses on supporting priority populations with an evolving healthy aging strategy for older adults, improving management of chronic disease in the community, and increasing access to primary care. Throughout the plan, we embedded system navigation projects so people can find and access the right care, at the right time, and in the right place. Community voices remain central to our planning and decision-making, along with strengthening our governance to support accountability, collaboration, and long-term system integration.

None of this work would be possible without the trust and collaboration of our community and organizational partners. Thank you for working with us to build a stronger, more connected healthcare system for Algoma.

**Martin Wyant**  
Tri-Chair

**Dr. Alan McLean**  
Tri-Chair

**Tim Vine**  
Tri-Chair

## Our Population

Our attributed population includes over 100,000 residents in 19 municipalities and spans approximately 31,000 km. Approximately 25% of individuals reside in rural areas outside of Sault Ste. Marie.

While we work toward a more coordinated healthcare system for our entire population, recognizing the uniqueness and diversity that lies within the communities across our District is an important part of work.

## Milestones



We hosted two healthy aging education series with our partners for older adults and their essential care partners.



We supported a pilot program for in-person pulmonary rehabilitation and sourced a virtual pulmonary rehabilitation pilot launching this upcoming year.



Our partners attached 6,000 residents to primary care, reducing our unattached population by 30%



We launched the Operations Committee and reinvigorated the Mental Health and Addictions System Planning Table to support our priority populations.

## Introducing the Operations Committee

The Operations Committee was established in September 2025 as part of our renewed governance structure. It brings together operational leaders from across Algoma to ensure that priority initiatives identified by the Leadership Council are effectively planned, resourced, and implemented.

The committee is action-oriented, grounded in data-informed decision-making and collaborative implementation. This approach aims to strengthen coordination across our partner organizations and support a more connected healthcare system.

Over the next year and beyond, the Operations Committee will work closely with partners to advance priority initiatives, support continuous improvement, and proactively respond to emerging risks and system pressures. Its focus will be translating our Annual Plan into meaningful, measurable results for the people of Algoma.

*"The Operations Committee is focused on turning plans into action. Our role as healthcare leaders is to strengthen coordination and maintain accountability to the outcomes that matter most to our communities."*

**Terry Caporossi, Executive Director of the Alzheimer Society of Sault Ste. Marie and Algoma District**

**Martin Wyant\***  
Patient Partner  
**\*Executive Committee**

**Terry Caporossi**  
Community Support Services

**Shauna Hynna**  
Acute Care

**Dr. Alan McLean\***  
Family Physician  
**\*Executive Committee**

**Lindsay Danz**  
Mental Health and Addictions

**Ali Juma**  
Youth Mental Health and Addictions

**Tim Vine\***  
Rural and Acute Care  
**\*Executive Committee**

**Silvana Dereski**  
Rural, North Algoma

**Suzanne Racette**  
Ontario Health @Home

**Dr. Jodie Stewart\***  
Primary Care  
**\*Primary Care Network Chair**

**Kirsten Farago**  
Primary Care

**Alyssa Spooner**  
Rural, North Shore

## Our Priority Populations

### Mental Health and Addictions

In response to rising mental health and addictions (MHA) challenges across rural Northern Ontario, AOHT partners launched a community-focused environmental scan in January 2025 to improve understanding of MHA services in North Algoma. At the heart of this work was a shared commitment to create a more coordinated, responsive, and equitable approach to MHA. The findings from the scan highlighted actionable opportunities in our Annual Plan over the next year, while serving as a model for how engagement and evaluation can lead to tangible outcomes.

These priorities will be supported by the reinvigorated MHA System Planning Table, which was established to advance MHA priorities across the district. With a vision of building an integrated system that functions as one coordinated team, the MHA System Planning Table works to plan, implement, measure, and advocate for MHA services across Algoma.

### Primary Care Access and Attachment

In May 2025, more than 19,000 residents in Algoma were identified as not having a primary care provider, highlighting a significant gap in access to comprehensive, continuous care. In response, organizations worked collaboratively to onboard new providers and expand rosters. As a result, over 6,000 patients have since been successfully attached to a primary care provider, reducing our unattached population by over 30%.

Building on this momentum, the Primary Care Network (PCN) provided a unified voice in regional healthcare system planning, strengthened collaboration, and advanced initiatives to support patients until they can be matched with a long-term primary care provider. Looking ahead, initiatives such as the RN Concierge and the Supported Attachment Team will play a critical role in advancing our work this year. These projects are designed to accelerate patient attachment and ensuring individuals are connected to the right care at the right time.

### Essential Care Partners

Often referred to as caregivers, play a critical role in providing unpaid physical, psychological, emotional, and or decision making support to their family member, partner, or friend. The shift from "caregiver" to Essential Care Partner (ECP) in healthcare settings, particularly in Ontario, is a deliberate move toward more person-centered care that emphasizes equality, collaboration, and the active role of family members or friends as part of the care team. Our team will continue to provide resources to support this population over the next fiscal year.

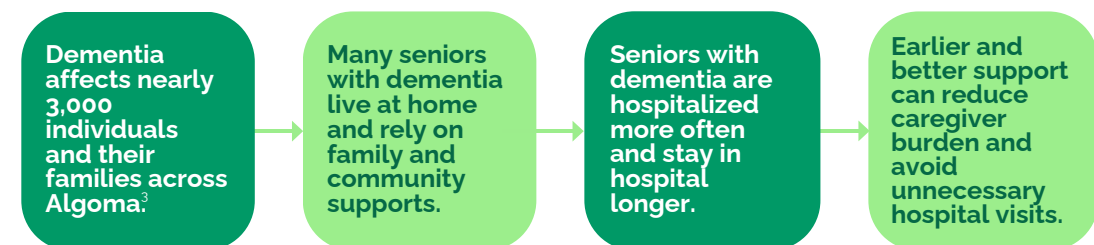
### Advancing Healthy Aging

Algoma has an aging population, and the needs of older adults in our communities are changing. Nearly 27% of Algoma's population is over the age of 65, compared to 19% across Ontario.<sup>1</sup> As people live longer, more individuals are affected by dementia.

Dementia is an increasing reality for many families across Algoma, and proactive approaches now can change the trajectory for our region. While the Healthy Aging program has supported older adults more broadly, data shows a need for a focused and coordinated approach to dementia care.

In response, our Annual Plan evolves the Healthy Aging program into a dedicated Dementia Strategy. By focusing on dementia and its impact across multiple healthcare sectors, we will leverage partnerships to foster a collaborative, community-wide approach. Our strategy aims to enhance quality of life for people living with dementia and ensure Algoma is prepared to meet growing demand in the years ahead.

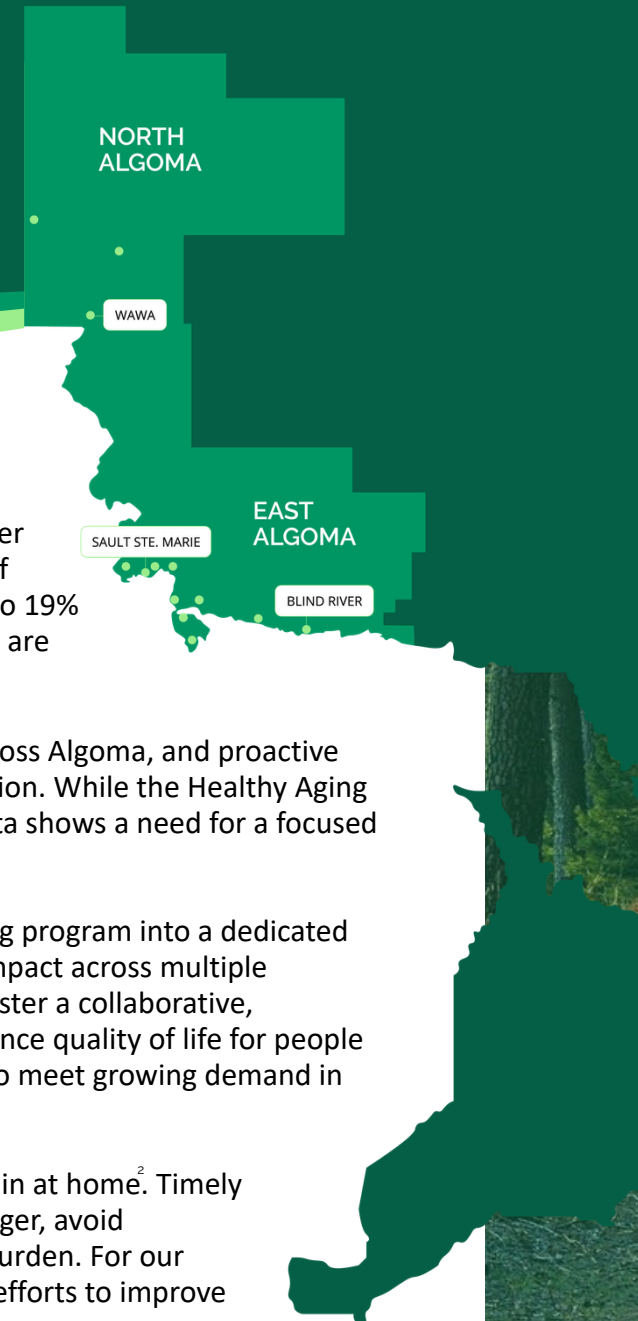
Many individuals living with dementia in Canada remain at home.<sup>2</sup> Timely and coordinated support can help them stay there longer, avoid unnecessary hospital visits, and reduce care partner burden. For our community, this evolved strategy means coordinated efforts to improve outcomes and a more effective healthcare system.



<sup>1</sup> Statistics Canada. (2023). Census Profile. 2021 Census of Population. Statistics Canada Catalogue no. 98-316-X2021001. Ottawa. Released November 15, 2023.

<sup>2</sup> Canadian Institute for Health Information. Dementia in home and community care. Accessed February 9, 2026.

<sup>3</sup> Dementia Projections for the Counties, Regional Municipalities, and Districts of Ontario; RW Hopkins & JF Hopkins; December 2008.



## 2026-27 Logic Model

Our identified priorities in the 2026-27 Annual Plan are grounded in population health data and continuous community engagement to ensure planning reflects local needs and lived experiences. Driven by equity and the interconnectedness of health and social determinants, our logic model prioritizes diverse community voices to guide strategies and improve outcomes.

### Strengthening Care in Algoma

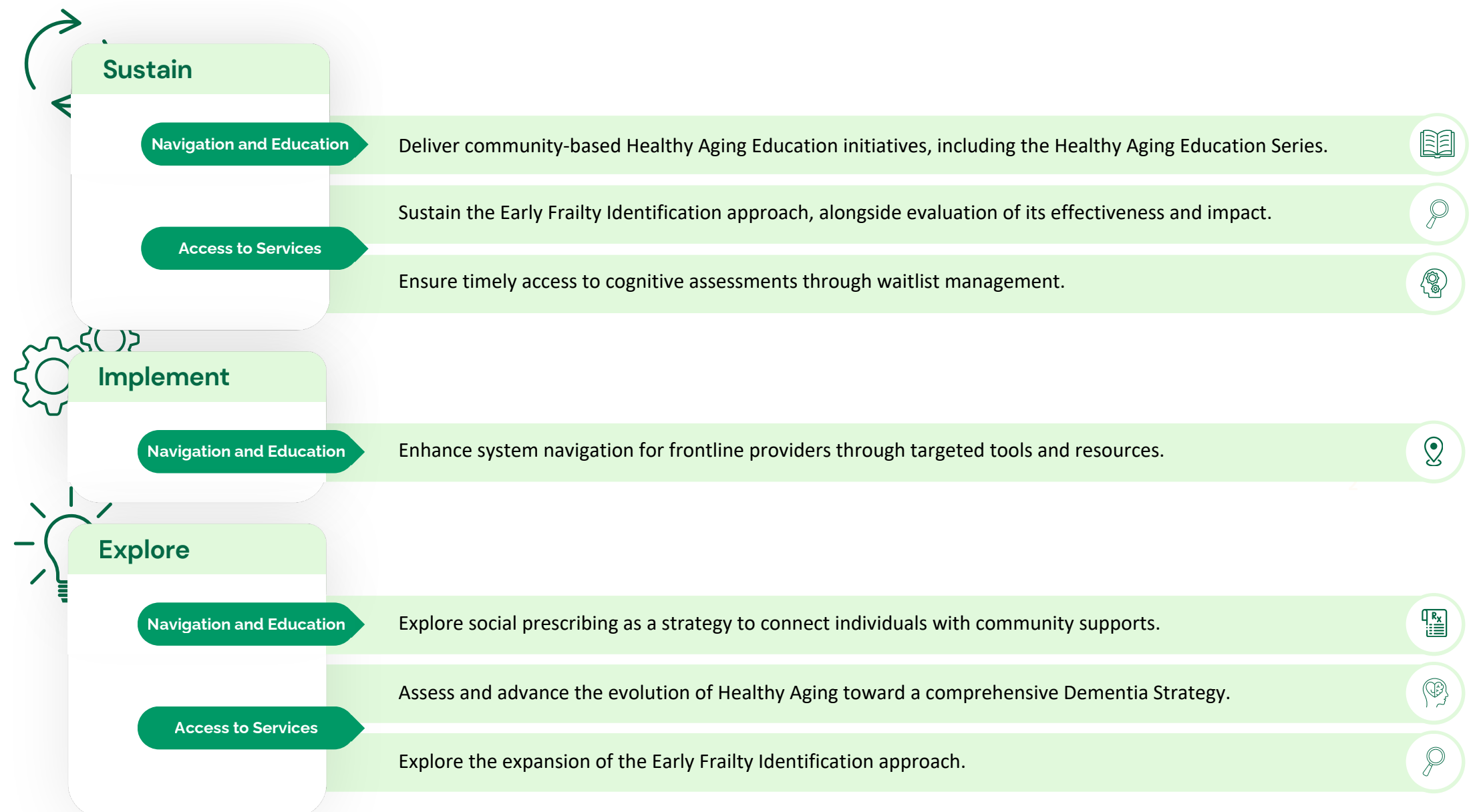
Integrating health and social services to improve access, outcomes, and experience for community members.

#### Older Adults: Healthy Aging

##### Primary Objective:

Evolve a coordinated Healthy Aging approach that builds on existing programs and partnerships, while integrating a Dementia Strategy to better support older adults.

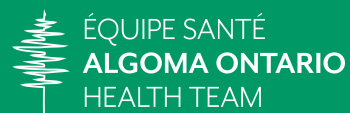
ÉQUIPE SANTÉ  
ALGOMA ONTARIO  
HEALTH TEAM



## Complex Chronic Conditions: Chronic Obstructive Pulmonary Disease (COPD)

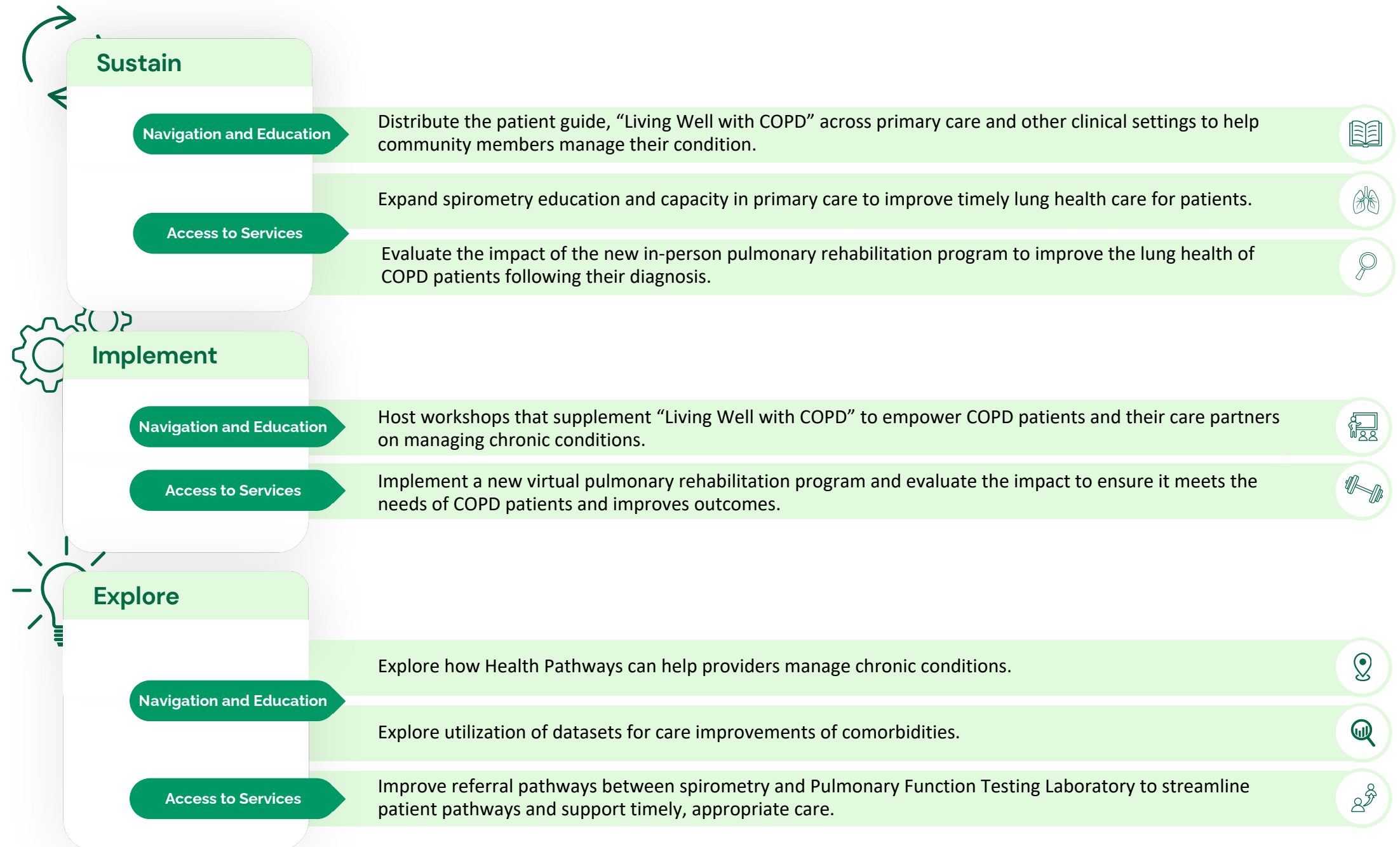
### Primary Objective:

Enhance the quality of life for people with COPD by raising awareness of the condition, risk factors, and prevention strategies.



## Strengthening Care in Algoma

Integrating health and social services to improve access, outcomes, and experience for community members.



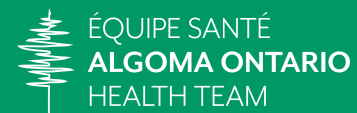
## Strengthening Care in Algoma

Integrating health and social services to improve access, outcomes, and experience for community members.

### Complex Chronic Conditions: Mental Health and Addictions (MHA)

#### Primary Objective:

Improve access and coordination to mental health and addictions services tailored to unique community needs.



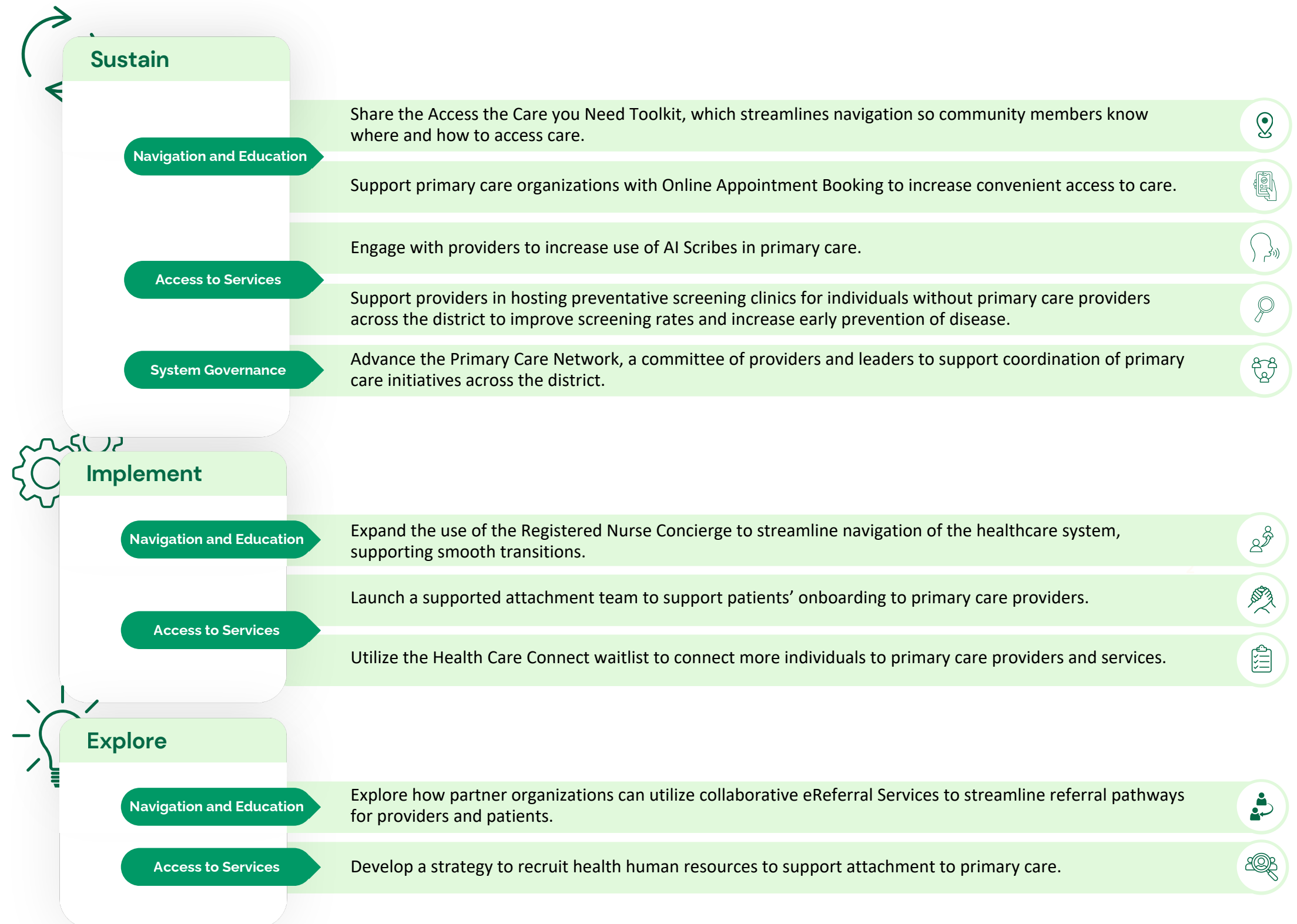
## Individuals Unattached to Primary Care: Access and Attachment

### Primary Objective:

Support Algoma residents who are unattached to primary care, increase attachment, and support primary care providers.

## Strengthening Care in Algoma

Integrating health and social services to improve access, outcomes, and experience for community members.



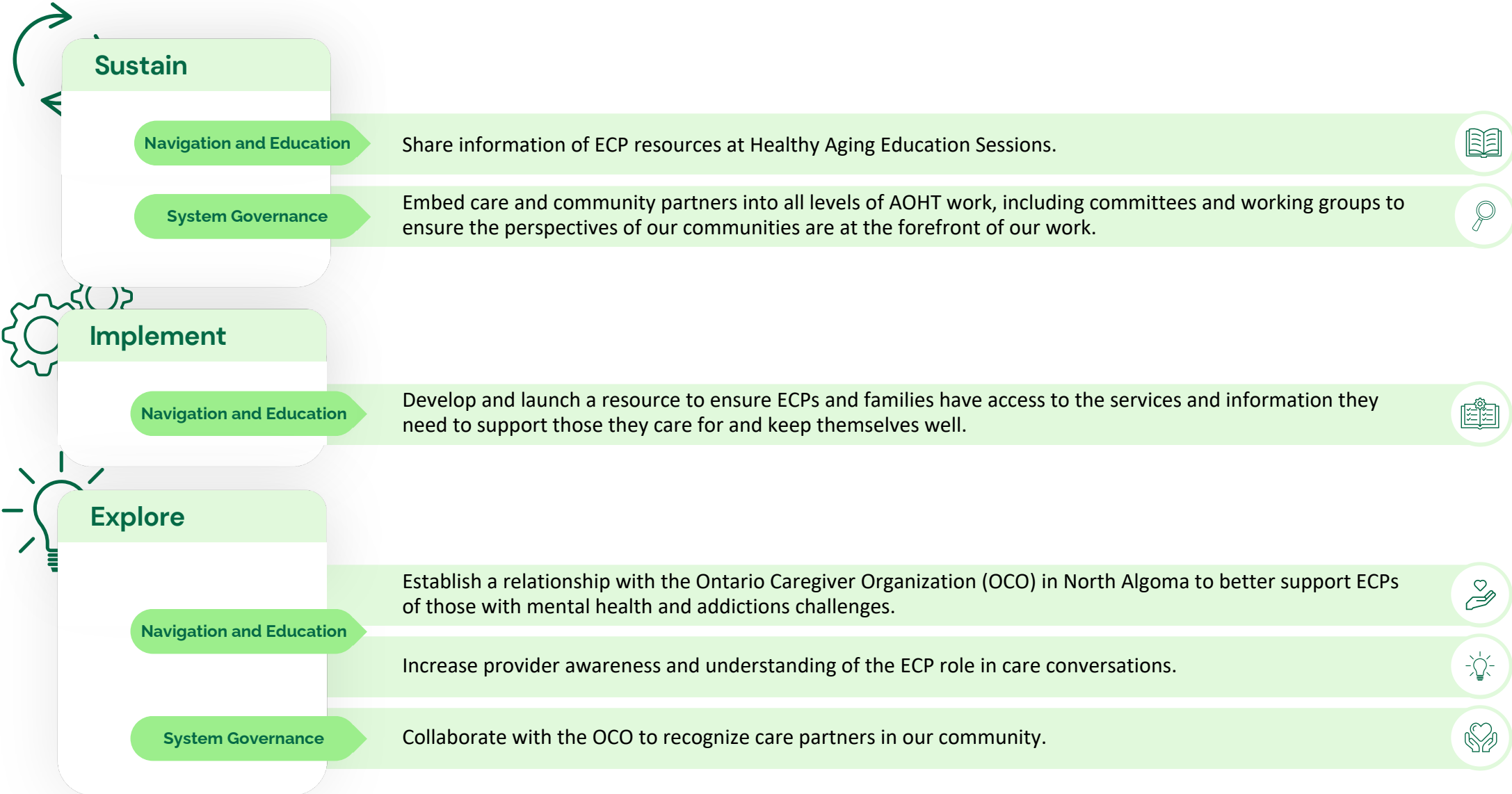
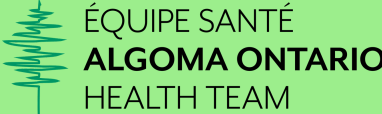
# Community Partnership and Engagement

Actively working with community voices to strengthen healthcare system initiatives.

## Care and Community Partners

### Primary Objective:

Recognize, support, and include care and community partners in the planning and development of AOHT work.



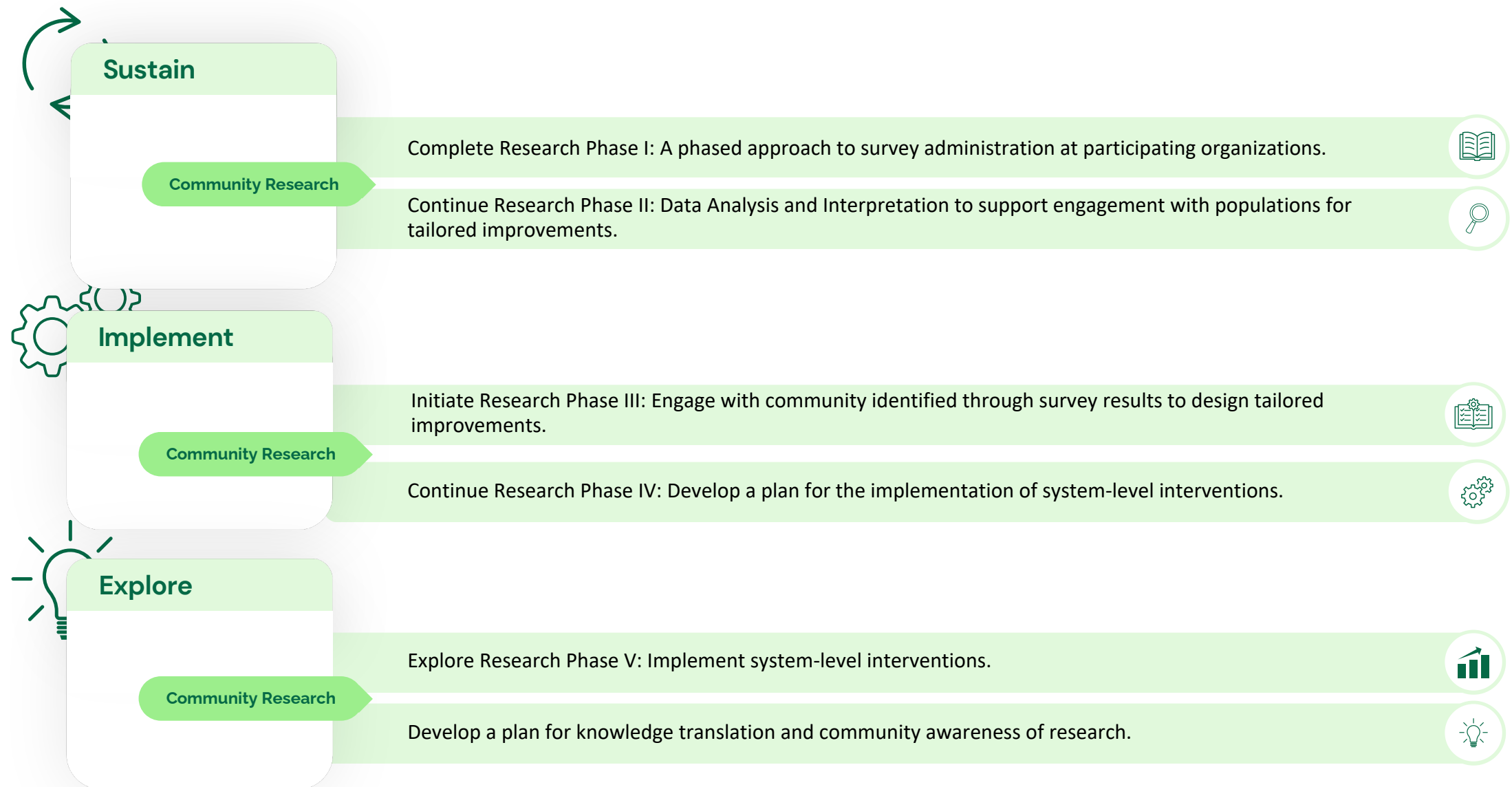
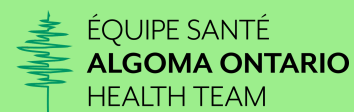
# Community Partnership and Engagement

Actively working with community voices to strengthen healthcare system initiatives.

## Advancing Equity in Healthcare

### Primary Objective:

Use community data to understand experiences at health and social service organizations to improve equity.



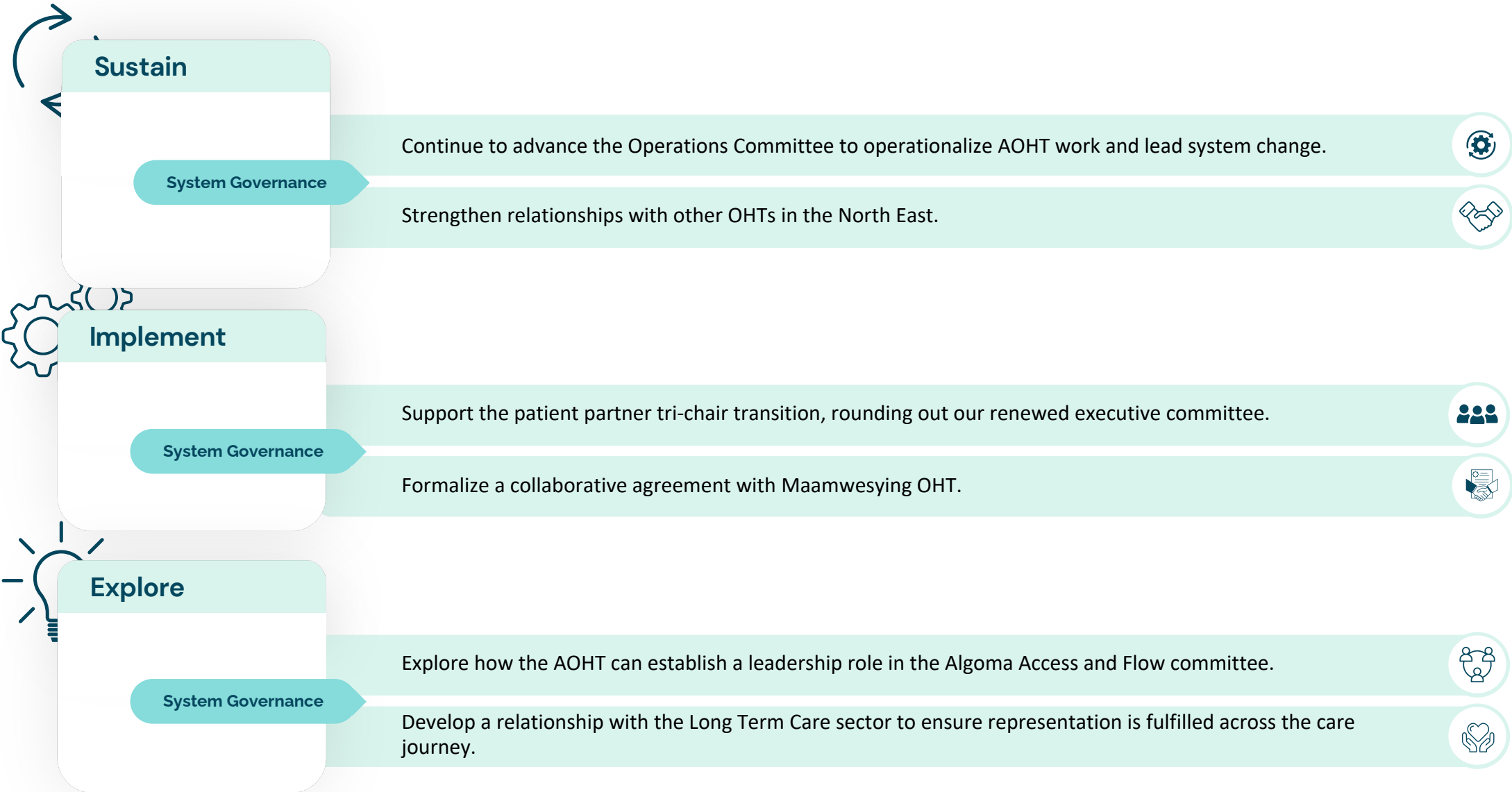
# Building a Foundation for Collaboration

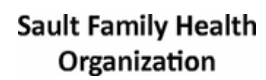
Creating a unified network of organizations, health professionals, and community members to better serve residents of Algoma.

## Advancing Equity in Healthcare

### Primary Objective:

Use community data to understand experiences at health and social service organizations to improve equity.





## Connect with us!

info@algomaoht.ca  
www.algomaoht.ca

